

# Erfassung und Speicherung von Forschungsdaten im Fachbereich Chemie

Bereitstellung moderner Forschungsinfrastrukturen durch ein elektronisches Laborjournal mit Repositorium-Anbindung

INSTITUTE OF ORGANIC CHEMISTRY - Stefan Bräse Group Karlsruhe



DFG

## Summary of the activities of the Compound Platform:

- chemistry (service and research)
- storage and distribution
- programming

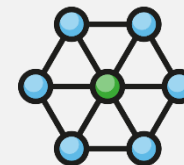
### Chemistry

- Design
- Synthesis
- Purification
- Analyses



### Materials Science

- Upscaling of reactions



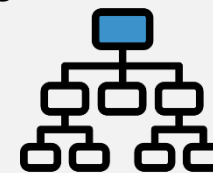
### Biology and Botany

- Formatting
- Distribution



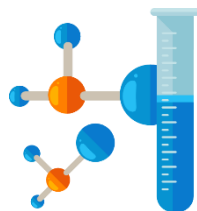
### Additional Institutes

- KIT-Library (BIB)
- Steinbuch Center for Computing (SCC)



### Requirement

Basic research  
Biologically interesting compound  
building blocks for materials,  
helper molecules  
Design of the synthesis



### Synthesis



### Proof by analysis

Application  
Storage  
(Data and Compound)  
New Requirement

## Summary of the activities of the Compound Platform:

- chemistry (service and research)
- storage and distribution
- programming

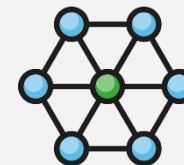
### Chemistry

- Design
- Synthesis
- Purification
- Analyses



### Materials Science

- Upscaling of reactions



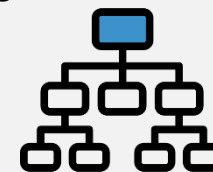
### Biology and Botany

- Formatting
- Distribution



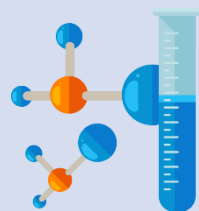
### Additional Institutes

- KIT-Library (BIB)
- Steinbuch Center for Computing (SCC)



### Requirement

Basic research  
Biologically interesting compound  
building blocks for materials,  
helper molecules  
Design of the synthesis



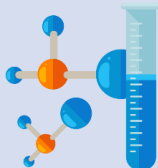
### Synthesis



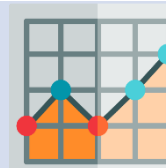
### Proof by analysis

Application  
Storage  
(Data and Compound)  
New Requirement

## Synthesis



## Analysis



### Lab-Documentation



*Chemicals, solvents, reaction scheme, description, observation, calculations, equipment*

### Server data (device)



*NMR data, spectroscopic data*

### Device information



*Values, amounts, volumes, time, temperature, conditions*

### Desktop data (device)



*(GC-, HPLC-)Chromatogramms*

### Additional information



*Additional info, images*

### Additional Data



*Crystal structures, mass spectra, EA, IR- UV-spectra*

# Access to research data: Key challenges

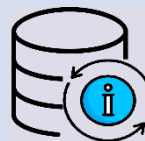
## Digital Data



### Almost no digital data

- Only written lab journals
- not searchable
- Analytical information not connected to synthesis
- Main datasets not processed

## Databases



### Commercial databases

- Good search functions
- Limited access
- Limited availability of data

### Open Access databases

Only few data

## Journals



### Limited content

- No primary data
- Almost no additional info
- accessibility

# Access to research data: Key challenges

## Digital Data



### Almost no digital data

- Only written lab journals
- not searchable
- Analytical information not connected to synthesis
- Main datasets not processed



### ELN

- Allows digital storage
- Processing of structures

## Databases



### Commercial databases

- Good search functions
- Limited access
- Limited availability of data

### Open Access databases

Only few data



### Repository

- Free access
- No limitation (file types)

## Journals



### Limited content

- No primary data
- Almost no additional info
- accessibility



### Repository

- Linkage of journal contents to additional data

# Key instrument: ELN implementation I

## Electronic Lab Notebook (ELN)



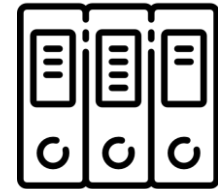
## Generic Functions

Adaptable to other fields of research  
Management and systematic structure

---

### Management and Organization

- Management for projects and subprojects (flexible structure)
- Organization according to lists and detail tabs
- User defined settings, BarCodes and QR-Codes
- Items are linked, ancestries are summarized and visualized



---

### Reporting

- Reports for single elements and projects
- User defined detail level
- Settings for formatting



---

### Share & Synchronize

- Share a selected group of information
- Synchronize to allow access to projects, support of collaboration
- User defined detail level
- Definition of groups for sharing and synchronization



# Key instrument: ELN implementation II

## Electronic Lab Notebook (ELN)

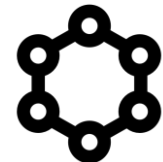


**Chemistry Specific Functions**  
Application in molecule based research  
Processing of chemical data

---

### Structure Editor (Ketcher)

- Standard functions + support of polymers/surfaces
- User defined templates and general accepted templates
- Information function for structures and substructures
- Implementation of abbreviations



---

### Export and Import functions

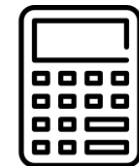
- Import and export of excel and sdf
- User defined export scheme (detail level)



---

### Calculations

- Calculations for elemental analysis (e.g. polymer supported material)
- Calculations of yield, control for „impossible values“



---

### Search functions

- Text search and structure (substructure/similarity) search





# Key instrument: ELN implementation II

## Electronic Lab Notebook (ELN)



**Chemistry Specific Functions**  
 Application in molecule based research  
 Processing of chemical data

### Additional Information: Database integration

- OpenBabel
- PubChem, SciFinder
- NMRbd
- Direct visualization in lists



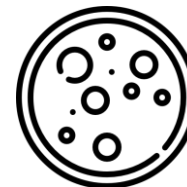
### Datasets and File attachment

- Description of metadata (dropdown and freetext)
- Labeling (approved, not approved)
- All file formats, no limitation



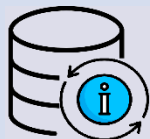
### Functions for biology and chemical biology

- Wellplate function for sample management
- Organizer for biological assays and their description
- Correlation of molecules, wellplates and assays



# Disclosure of information: Repository

## Repository

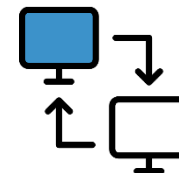


## Basic Functions

Technology identical with ELN  
 Generic and field specific functions identical

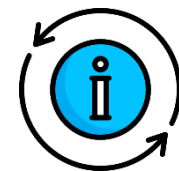
## Input and Transfer of Data

- Selection of data within ELN, determination of detail level
- Transfer of data via shared folder repository-ELN
- Visibility of data after additional confirmation
- Data for molecules and reactions



## Characteristics

- Search functions based on FP2-fingerprints
- Metadata defined by ELN definitions
- DOI-generation, PubChem listing, Datacite indexing



## Visibility and Advertisement

- Infrastructure for repositories
- Competitions with incentives (by KIT-Stiftung)



# Disclosure of information: Repository

Electronic Lab  
Notebook (ELN)



Repository



External



**Selection**

Datasets to publish



**Private Repository**

Virtual DOI from metadata  
(molecule-dataset)



**Open Repository**

DOI – dataset/molecule url  
(TIB Hannover)



Mint and register  
DOI

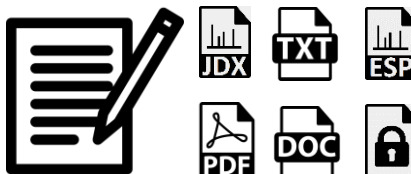
**PubChem**

Structure + DOI

DOI-resolver



Molecule - Datasets



# Challenges and questions

## Electronic Lab Notebook (ELN)



Integration of additional information systems

- OpenPhacts (server)
- Reaxys

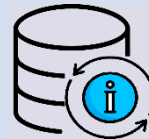
API to alternative archives

- bwDataDiss
- Radar

Device Integration

- Dial-a-device

## Repository



Establishment of automatic proof of analyses

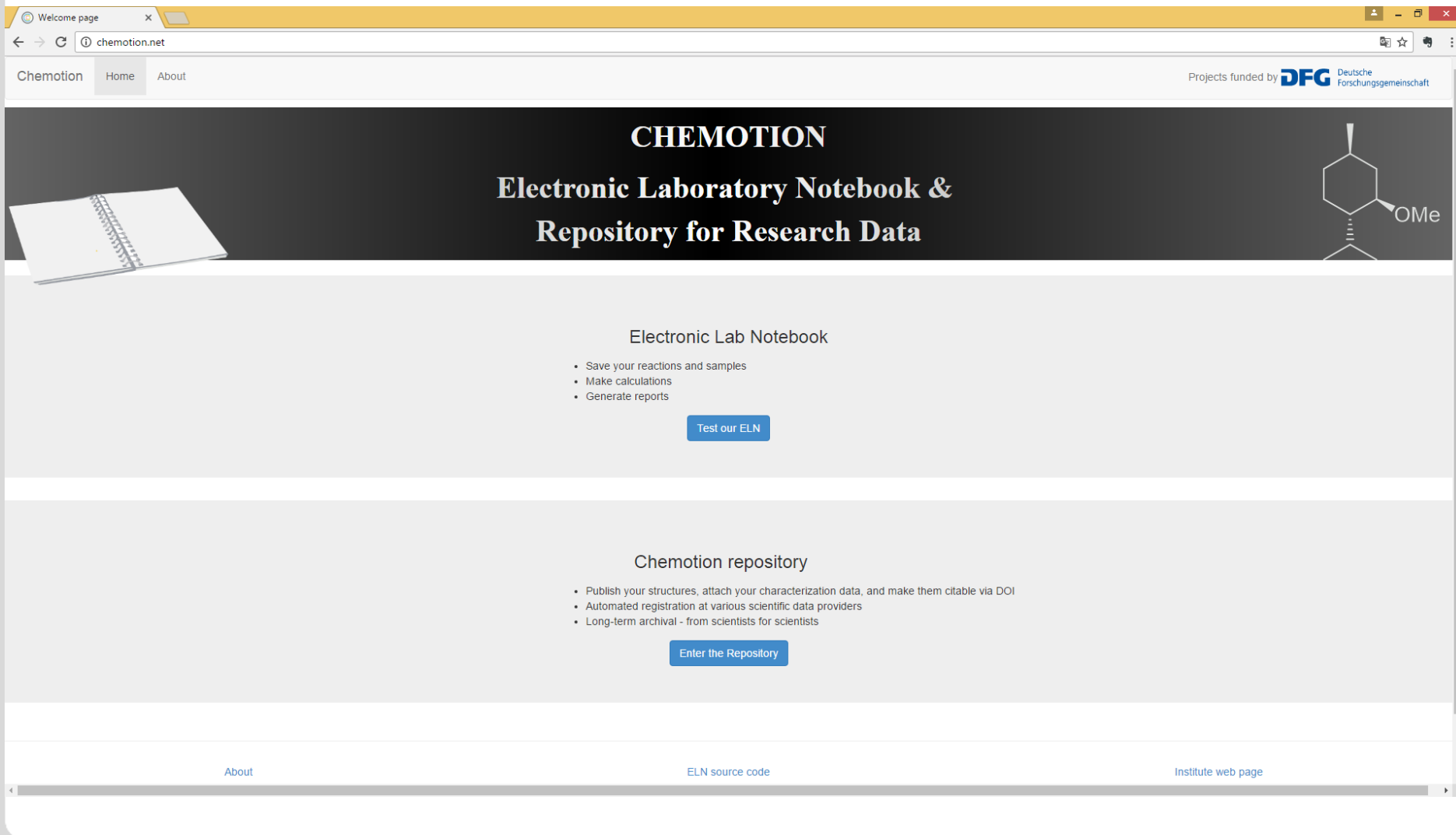
Acceptance of datasets for registration processes

## Advanced



Deep learning support

- Data analyses
- Reaction prediction



The screenshot shows a web browser window with the URL [chemotion.net](http://chemotion.net). The browser's address bar shows "Welcome page" and "chemotion.net". The website's navigation menu includes "Chemotion", "Home", and "About". A banner at the top right states "Projects funded by DFG Deutsche Forschungsgemeinschaft". The main header features the text "CHEMOTION Electronic Laboratory Notebook & Repository for Research Data" next to a chemical structure of a substituted cyclohexane ring and an image of a spiral notebook. Below the header, there are two main sections: "Electronic Lab Notebook" and "Chemotion repository".

Chemotion [Home](#) [About](#) Projects funded by **DFG** Deutsche Forschungsgemeinschaft

## CHEMOTION

### Electronic Laboratory Notebook & Repository for Research Data

**Electronic Lab Notebook**

- Save your reactions and samples
- Make calculations
- Generate reports

[Test our ELN](#)

**Chemotion repository**

- Publish your structures, attach your characterization data, and make them citable via DOI
- Automated registration at various scientific data providers
- Long-term archival - from scientists for scientists

[Enter the Repository](#)

[About](#) [ELN source code](#) [Institute web page](#)

# Thank you for your attention



DFG



KIT STIFTUNG



cubuslab



CYNORA  
optoelectronic solutions



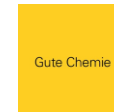
SCIFINDER®  
A CAS SOLUTION



NINIA  
CONCEPT.COM



SIGMA-ALDRICH



Gute Chemie



abcr



Fritz Henkel  
Stiftung



Thermoanalytik  
Karger



KMF  
NEUBERGER

Icons made by *Freepik*, *Madebyoliver*, *Anatoli*, *Dinosoft*, *Vectors market*, *Zlatko Najdenovski*, and *Gregor Cresnar* from [www.flaticon.com](http://www.flaticon.com)

